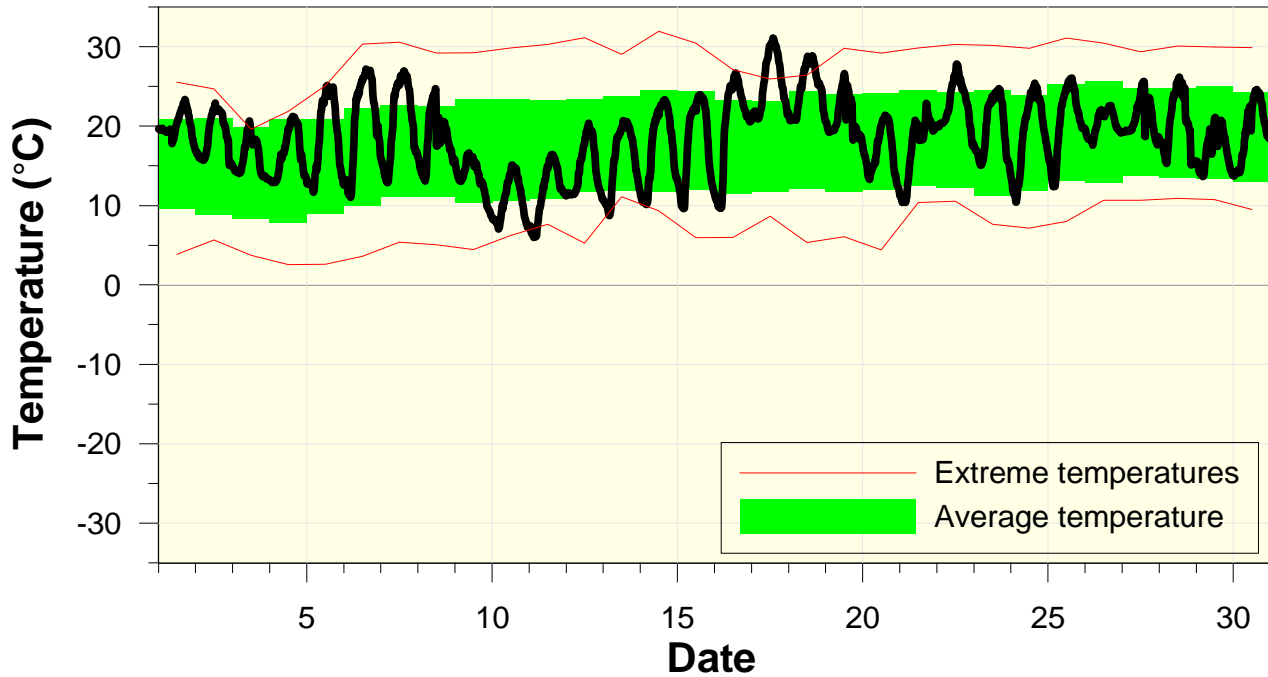


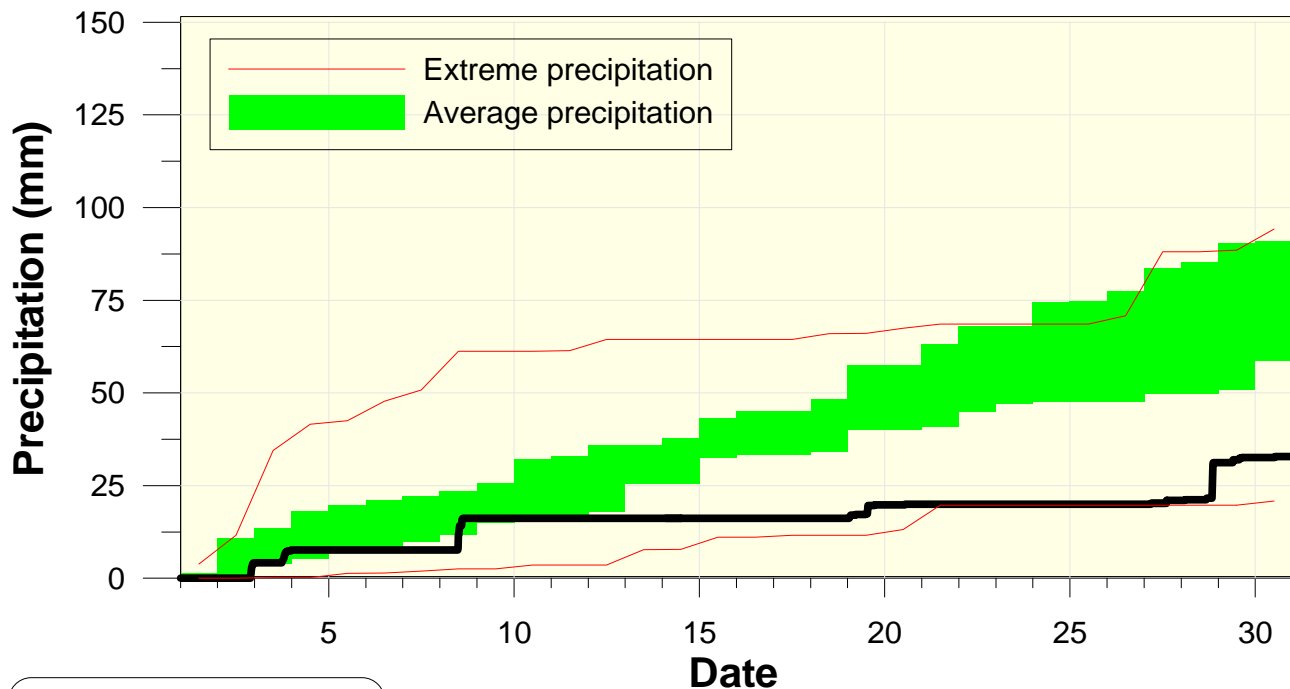
## Temperature at the Waterloo Weather Station June 2006



High/Low Temp: 31.1 °C / 6.0 °C  
 Average Daily High: 23.7 °C  
 Average Daily Low: 13.1 °C

The higher than average daily lows caused this to be an above average month for temperature, despite the average daily highs being very close to average.

## Precipitation at the Waterloo Weather Station June 2006



Total precipitation  
32.8 mm

Less than half of the average precipitation fell this month.